

## EverGreen Water Softening System

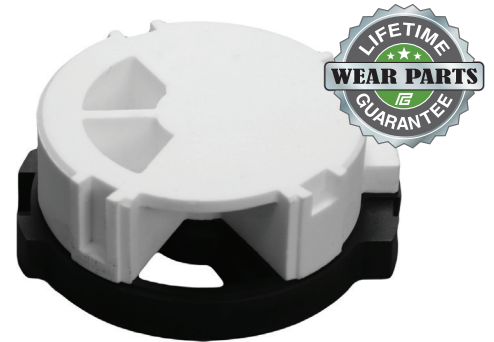
An Environmentally-friendly, Sustainable Solution with a Lifetime Wear Parts Guarantee

EverGreen is the only system on the market whose solid, internal actuators are designed to stay in service forever! It's the customer's choice for high performance, the Earth's choice for sustainability, and the contractor's choice for low-maintenance operation.

### The Secret is Inside

EverGreen features the most robust valve on the market, with superior construction and features. It's designed to stay in service and out of the landfill.

- Made of Corundum ceramic and graphene (200x stronger than steel!) with no wear parts to service or replace
- Hermetically sealed parts for impregnable resistance to corrosion, wear, or tear
- Maintenance-free actuators
- Lifetime guarantee on internal ceramic and graphene parts



### Smart Controls Increase Efficiency

- Bright, easy-to-read LCD display
- Long-term memory for program functions
- Memory backup (for power outages)
- External control not required for multiple system configurations or external devices
- Programmable in English, Spanish, Chinese, and French
- Options to minimize water usage, including:
  - Pre- and post- backwash and brine fill
  - Meter and timer capabilities
  - Maximum day override
  - External brine motor
  - External device control with additional relay
  - Remote handling port for regeneration input
  - Programmable company info for end user use



### Water Softening for the Next Generation

Designed with the Earth and the customer in mind, EverGreen uses an environmentally-friendly, upflow regeneration process and specialty uniform media. It outperforms the competition in every way...

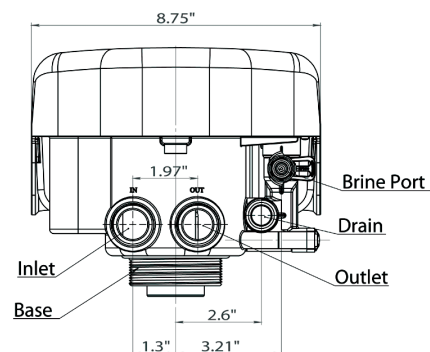
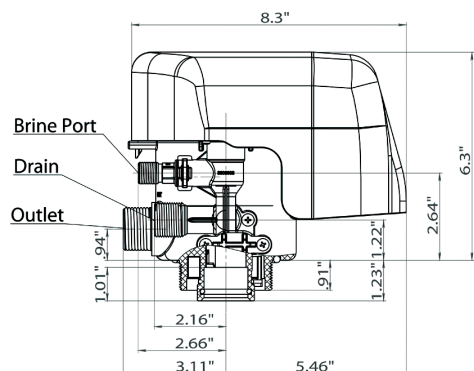
- 75% less salt
- 75% less water
- 100% fewer wear parts to replace
- 100% fewer spare parts in the landfill



For more information on the EverGreen Water Softening System, contact Pargreen today for the dealer nearest you.



## Miami Alkaline Water Softening System



### Miami Alkaline Water System Specifications

| Model*  | Resin**<br>Cubic Feet | Overall Height<br>Inches | Diameter<br>Inches | Flow Rate<br>Gallons Per<br>Minute <sub>1</sub> | Water (Gallons)<br>Used Per<br>Regeneration <sub>2</sub> | Ultra High<br>Efficiency<br>Grains<br>Exchanged<br>Per lb. Salt <sub>3</sub> | High<br>Efficiency<br>Grains<br>Exchanged<br>per lb. Salt |
|---------|-----------------------|--------------------------|--------------------|---|--|--|---|
| SSB948  | 1                     | 54.7                     | 9                  | 16  | 46   | 4,000 to 5,000   | 3,111   |
| SSB1054 | 1.5                   | 60.9                     | 10                 | 18  | 58   | 4,000 to 5,000   | 3,111   |
| SSB1252 | 2                     | 59.0                     | 12                 | 20  | 84   | 4,000 to 5,000   | 3,111   |
| SLB1354 | 2.5                   | 61.4                     | 13                 | 22  | 96   | 4,000 to 5,000   | 3,111   |
| SLN1465 | 3                     | 72.2                     | 14                 | 24  | 113  | 4,000 to 5,000   | 3,111   |
| SLN1665 | 4                     | 72.1                     | 16                 | 26  | 148  | 4,000 to 5,000   | 3,111   |

\* Additional Sizes Available

1 - Flow Rate at 25 PSI Drop

2 - Usage Based on Water Supply Quality; Usage  $\pm$  25%

3 - Salt Efficiency Subject to Water Quality

\*\* Available in SR (Standard Resin) and FR (Fine Uniform Mesh)

### Electrical / Operational Specifications

| Control Valve      |               | Working Conditions          |                |
|--------------------|---------------|-----------------------------|----------------|
| Transformer Input  | 120VAC - 60Hz | Water Pressure              | 20 - 120 PSI   |
| Transformer Output | 12VDC - 2A    | Water Temperature           | 35°F - 125 °F  |
| Valve Wattage      | 24W           | Hardness Level <sub>4</sub> | 3 to 50 Grains |

4 - For Water Hardness Over 50 Grains, Contact PWT Technical Support

### Control Valve Parameters

| Inlet           | Outlet          | Drain <sub>5</sub> | Brine Line | Base         | Riser Tube | Hard Water Bypass         |
|-----------------|-----------------|--------------------|------------|--------------|------------|---------------------------|
| .75", 1", 1.25" | .75", 1", 1.25" | 1/2" Barb          | 3/8"       | 2.5" - 8NPSM | 1-1/4"     | Yes - During Regeneration |

5 - Drain Connection Also 3/4" MNPT

### Additional Specifications

| Valve Material | Tank Material | Meter Accuracy | Clock                          |
|----------------|---------------|----------------|--------------------------------|
| Noryl*         | FRP           | $\pm$ 5%       | 12 Hour - with Battery Back-up |